

Changing Domestic Violence Services in Leicester

Stephanie McBurney 19/6/12



Vision for Leicester

To work together to prevent domestic violence and to provide support and protection to anyone who has been affected by domestic violence, based on equality, partnership working and knowledge of what works.

What Is Domestic Violence?

- Physical, sexual, emotional, financial
- Forced marriage, honour based violence, female genital mutilation
- Control, fear and shame
- Loss and isolation
- Government definition consultation: age, incidents

- If you are worried about someone, talk it through with a specialist agency. In an emergency, call 999.

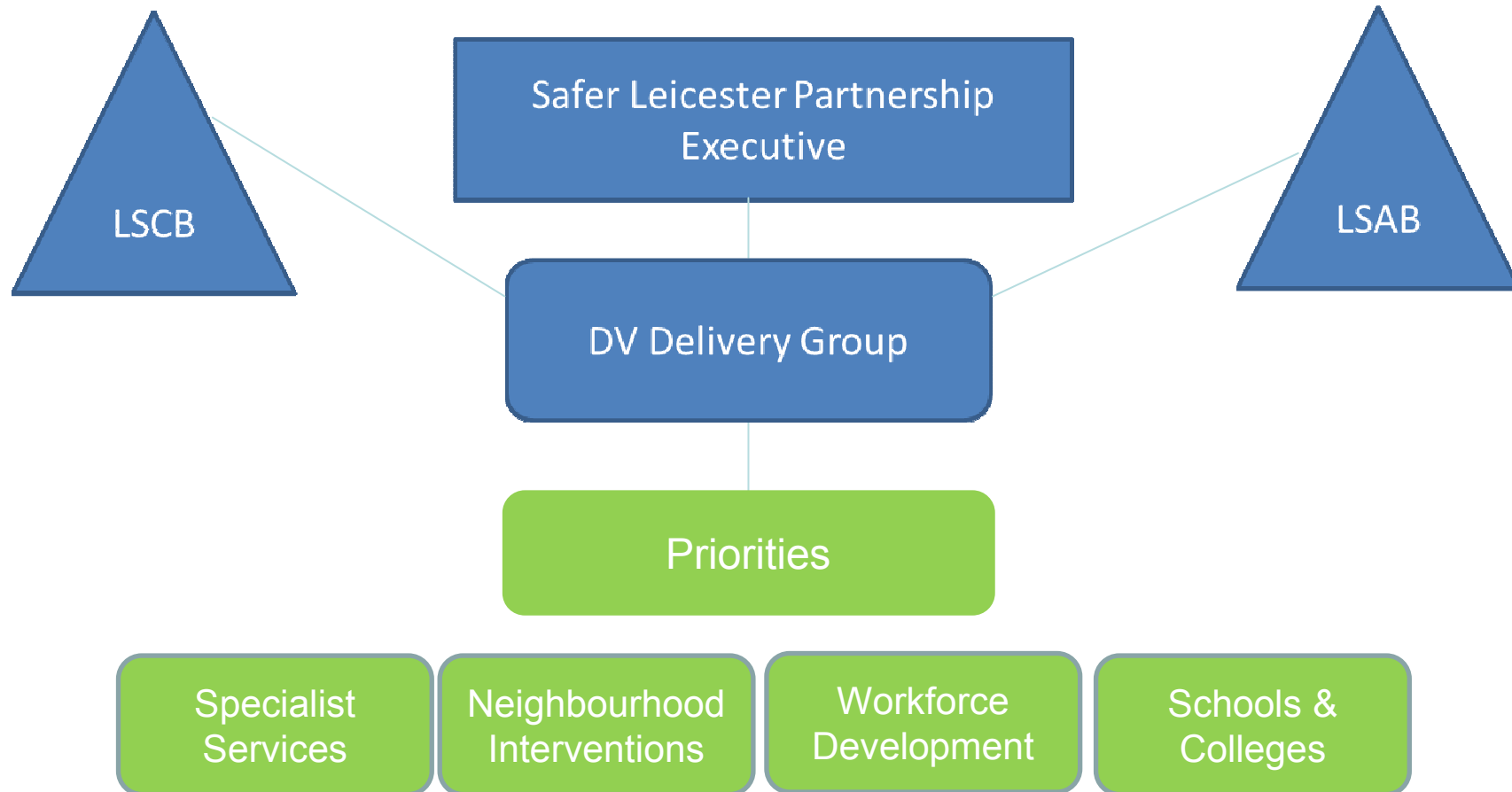
Domestic Violence in Leicester

- Over 700 reports made to Police every month
- 40% of people may never report to anyone
- Cost to Leicester of £35.7m, or £97.1m (H/E)
- Over 1500 referrals to the children and young people's service every nine months
- 29% of women and 16% of men will be affected
- In 2010-11 the local MARAC considered 193 victims at high risk of homicide or serious harm with 258 children

Evington Park Community

Year	Number Incidents Reported to Police	% of incidents across all wards
2008-09	157	1.93%
2009-10	156	2%
2010-11	174	2.23%
2011-12		

Strategy Delivery 2012-13



Why we started the review

- Want to fill the gaps
- Want to make improvements
- Want to make best use of resources
- Want to update the evidence base
- Want to create a more stable sector, where people know what is available

What we have available now

- Helpline
- Additional Security Keep Safe (ASK)
- Outreach
- Refuge
- Independent Domestic Violence Advisors
- Children's work in refuges

Changes

- Support for those wishing to change their abusive behaviour
- Increase support for children and families
- Streamline access points
- Flexible specialist provision
- Extending access times

What Now?

- New services will be announced early July
- Working with existing and new providers for a smooth changeover
- Some organisations will still exist without our funding
- Police leading neighbourhood pilot for low and reporting areas
- Use the community funding to support this work
- Will be spreading the word about how to get in touch

What Can You Do?

- Look out for the signs
- Talk to specialist services and/or your local points of contact
- Volunteer
- Know where to get help
- Question your school, workplace, education provider
- Look for posters and general information
- Know the dangers
- Don't accept or support it!